

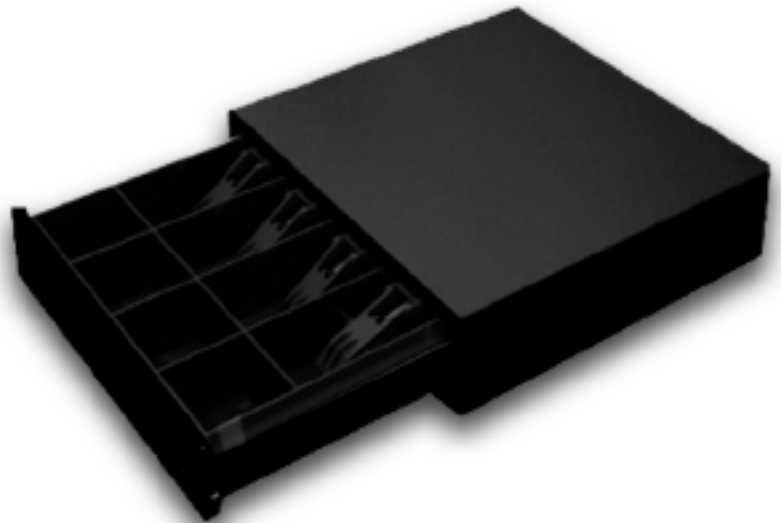
IPT-CD33

Cash Drawer



Main Specifications

- Small size for easy install suit for limited space
- Bottom case: No screw in the bottom case
- Three-Position lock for maximum cash security
- Unitized steel reinforce 1-piece body that adds strength providing a solid foundation
- Tested to endure 1,000,000 cycles
- 2PIN/24V, or 6PIN/ 24V
- All steel with a stainless steel front
- RJ11 connector to connect POS
- Locked Closed
- On-Line (Opens electrically)
- Manual Open
- Include two keys



Dimensions

- 350(W)x350(L)x80(H)mm
- 13.8"(W)x13.8"(L)x3.2"(H)
- Weight 4.6kgs
- Cash tray is literally constructed by indestructible ABS thermoplastic.
- Featuring modern lightweight construction, it is designed for easy of handling and carrying
- Bill Tray: 4 Coin Tray: 4